



PVX-340T SOLAR BATTERY

VRLA-AGM Deep Cycle Battery for Off Grid and Grid Tied Systems.

Sun Xtender batteries provide safe, reliable and long lasting power. Environmentally friendly, there is no exposed lead on Sun Xtender batteries and they are 100 percent recyclable. Sustainable, Clean, Renewable Energy Storage.

Since 1987, Sun Xtender Battery has been designing valve regulated lead acid batteries with AGM construction (VRLA-AGM). The non-spillable construction eliminates the requirement to monitor and replenish water levels.

Utilizing pure lead calcium grids, the plates are thicker than the industry standard for longer cycle life, increased reliability and power. The low impedance AGM design allows for excellent charge acceptance and there is no current limit required with controlled voltage charging.

PVX-340T and the complete Sun Xtender Battery product line features proprietary PolyGuard® Microporous Polyethylene Separators, shielding the positive plates against shorting, shock or vibration. No other manufacturers offer this dual layer insulation protection feature.

Sun Xtender Battery covers and containers are uniquely molded with high impact, reinforced copolymer polypropylene and are designed with thick end walls to prevent bulging. The copper alloy T Terminals are corrosion resistant and are supplied with silicon bronze bolts and washers.

All Sun Xtender Batteries ship Hazmat Exempt.

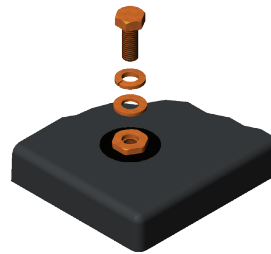
PVX-340T Specifications

Voltage	12 Volts
Industry Reference	U1
Maximum Weight	25 LB / 11.4 KG

Nominal Capacity Ampere Hours @ 25° C (77° F) to 1.75 volts per cell

1 Hr. Rate	2 Hr. Rate	4 Hr. Rate	8 Hr. Rate	24 Hr. Rate	100 Hr. Rate
21 Ah	27 Ah	28 Ah	30 Ah	34 Ah	37 Ah

Specifications are subject to change without notice. The data/information contained herein has been reviewed & approved for general release on the basis that this document contains no export controlled information.



M6 Threaded Insert Standard Terminals (Copper Alloy)

M6 Threaded Inserts are used for PVX-340T & PVX-420T only. All batteries with a "T" at the end of the part number incorporate M8 threaded insert terminals, all batteries are supplied with silicon bronze bolts, nuts, and washers required for installation.

